



Spreading love in the community

How Christian nurseries and preschools help to nurture families and local communities

Introduction

Christian nurseries and preschools play a significant role in fostering early childhood development and education. However, their impact extends beyond the classroom as they actively seek to connect with their local communities, sharing the love and teachings of Jesus. In this article, we will explore how Christian settings are reaching out to their communities and making a positive difference in the lives of children and families.

1. Building relationships

Christian preschools prioritise building strong relationships with families. They understand that such relationships are the

A nurturing environment where families feel valued, supported, and spiritually enriched

foundation for making a lasting impact in the lives of children. By cultivating a sense of community, these schools create a nurturing environment where families feel valued, supported, and spiritually enriched.

2. Community service projects

Christian nursery schools often organise community service projects that allow children, parents, and staff to serve others. These projects may include food bank donations, collection of clothing and toys for those in need, or partnering with local charities. By actively participating in these initiatives, children learn the importance of helping others and



develop a compassionate heart, following in the footsteps of Jesus.

3. Faith-based curriculum

Christian nursery schools integrate faith into their curriculum, creating a unique educational experience. Through Bible stories, songs, and prayers, children are introduced to the teachings of Jesus in a way that is approachable and engaging. By incorporating Christian values into daily activities, these schools foster an environment where children can grow in their understanding of God's love.

4. Community events and outreach

Christian nursery schools often host community events, such as fundraisers, family fun days, or workshops. These events provide opportunities for families to connect with one another and build relationships within the community. Additionally, schools may offer parenting classes or workshops that address topics related to child development and spiritual growth.

They serve as beacons of God's love and compassion in their communities

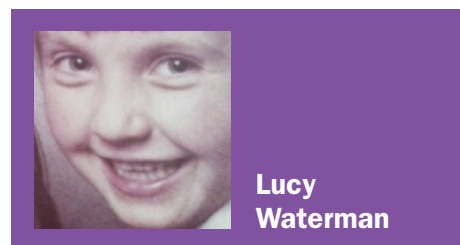
5. Partnership with local churches

Christian nursery schools often collaborate with local churches to further extend their reach in the community. By partnering with churches, schools can offer additional resources, such as hosting vacation Bible schools, inviting pastors or church members to speak at school events, or organizing joint community outreach projects. This partnership strengthens the connection

between the school, families, and the broader Christian community.

Conclusion

Christian nurseries and preschools are not just early childhood settings; they serve as beacons of God's love and compassion in their communities. By actively seeking to connect with families, engaging in community service projects, integrating faith into their curriculum, hosting community events, and partnering with local churches, these schools strive to bring the love of Jesus to everyone they encounter. Through their efforts, Christian nurseries and preschools create a positive and nurturing environment that shapes the hearts and minds of the youngest members of our communities.



Lucy Waterman